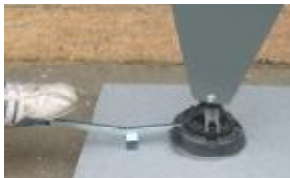


You know where you can stick it.....



anywhere, anytime, everytime!

By far the simplest solution for temporary signage, the TMP Magnaflex is ideal for any situation.

Placed on top of a pre-fixed magnetic base plate, once installed the signs are capable of withstanding impacts of up to 15mph.

With no drilling required for installation, the TMP Magnaflex posts are ideal for use in various applications providing immediate temporary delineation, wherever it's needed.

Either surface mounted or counter-sunk into concrete or asphalt the magnetic base system has been specifically designed to reduce the risk of trip hazard.

The full range of TMP signage can be mounted on the TMP Magnaflex post system and a full bespoke design service for signs is also available.

Ideal for use in any location including:

- Multi-storey car parks
- Warehouse floors
- Loading Docks
- Concourses
- Pedestrian Pathways
- Temporary road closures



## TMP Magnaflex installations in Ireland



+353 87 24 23 634



+353 1 278 8265



[info@roadsignservices.ie](mailto:info@roadsignservices.ie)



[www.roadsignservices.ie](http://www.roadsignservices.ie)

Richard Strahan at Road Sign Services  
31 North Avenue, Mount Merrion, County Dublin, Ireland